

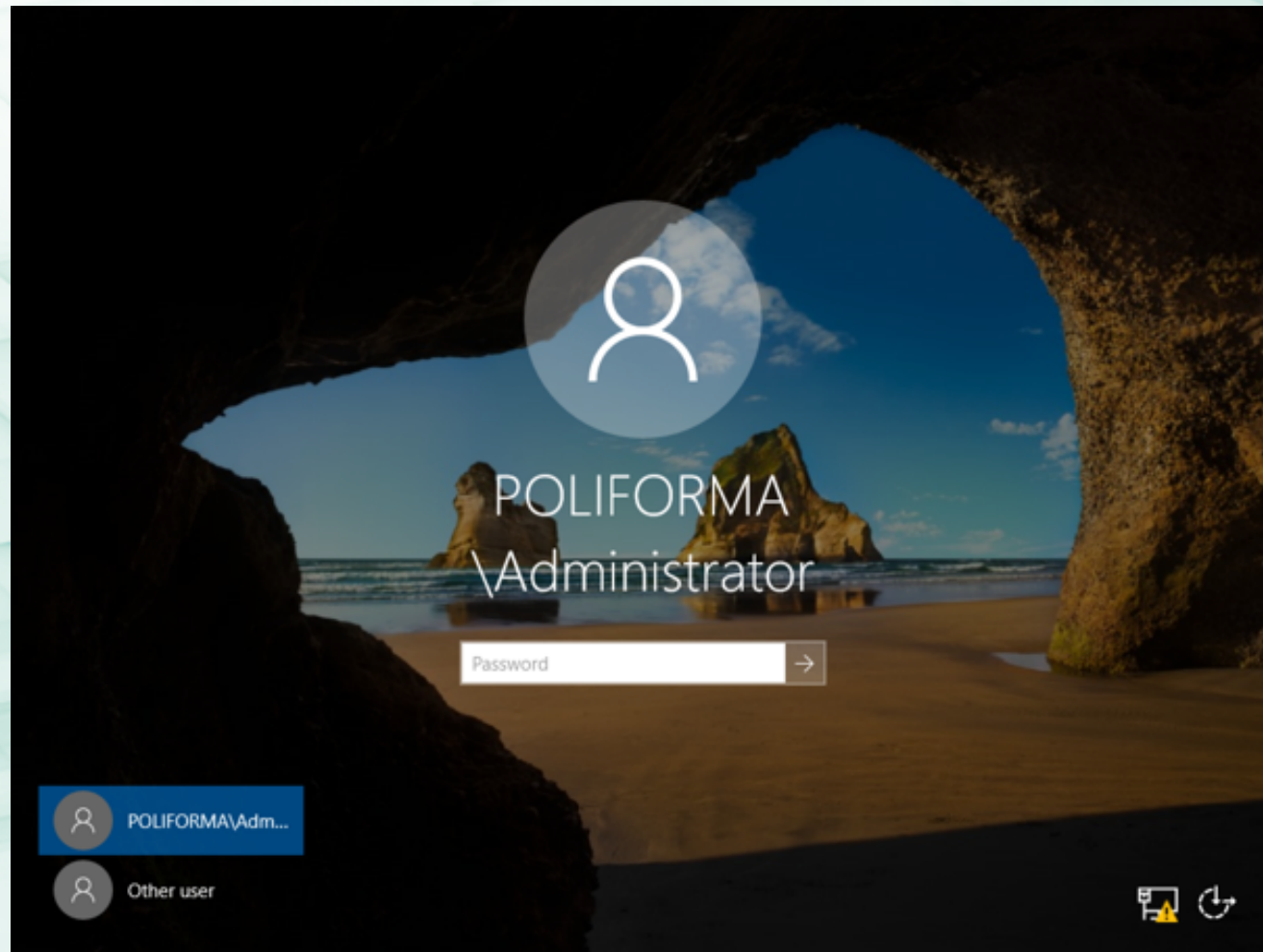
## Hoofdstuk 2

### Practicum 2.2.1 t/m Practicum 2.4.1

Active Directory



## Inloggen als domain Administrator



2

The screenshot shows the Windows Server Manager interface. On the left, the navigation pane is set to 'AD DS'. The main area displays a table of servers with columns for 'Server Name', 'IPv4 Address', and 'Manageability'. Below this is an 'EVENTS' section with a table of event logs. On the right, the 'Tools' menu is open, listing various administrative tools. The item 'Active Directory Users and Computers' is circled in red. Handwritten red text 'Tools' is positioned above the menu, and 'Active Directory Users and Computers' is written in a larger font to the right of the menu.

Server Name	IPv4 Address	Manageability
PFSV1	192.168.101.11, 192.168.2.111	Online - Performance counters not available

Server Name	ID	Severity	Source
PFSV1	1202	Error	DFSR
PFSV1	1202	Error	ADWS
PFSV1	4013	Warning	Microsoft-Windows-DNS-Server-Service
PFSV1	2886	Warning	Microsoft-Windows-ActiveDirectory_DomainServices
PFSV1	1539	Warning	Microsoft-Windows-ActiveDirectory_DomainServices
PFSV1	6016	Warning	DFSR

p. 89 - 90

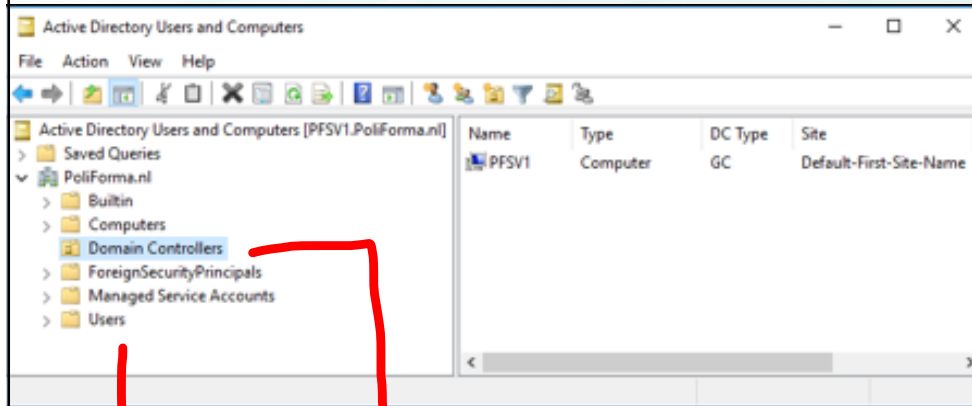
14-10-2018

Netwerdbeheer met Windows Server 2016, Jan Smets

3



# Active Directory Users and Computers



Users

Domain Controllers

p. 91

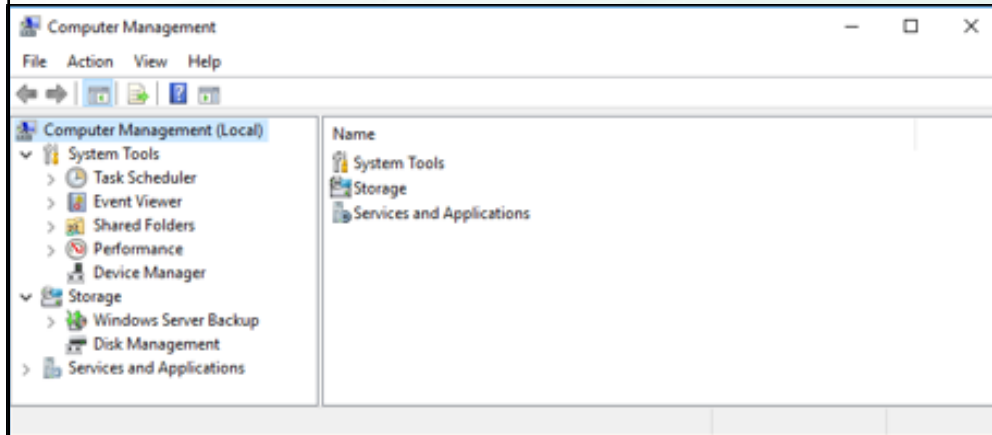
14-10-2018

Netwerbeheer met Windows Server 2016, Jan Smets

4



Op een DC geen machine local users en groups



Control Panel  
Adm. tools  
Computer Mgt  
Er is geen Local Groups  
and  
Users

p. 92

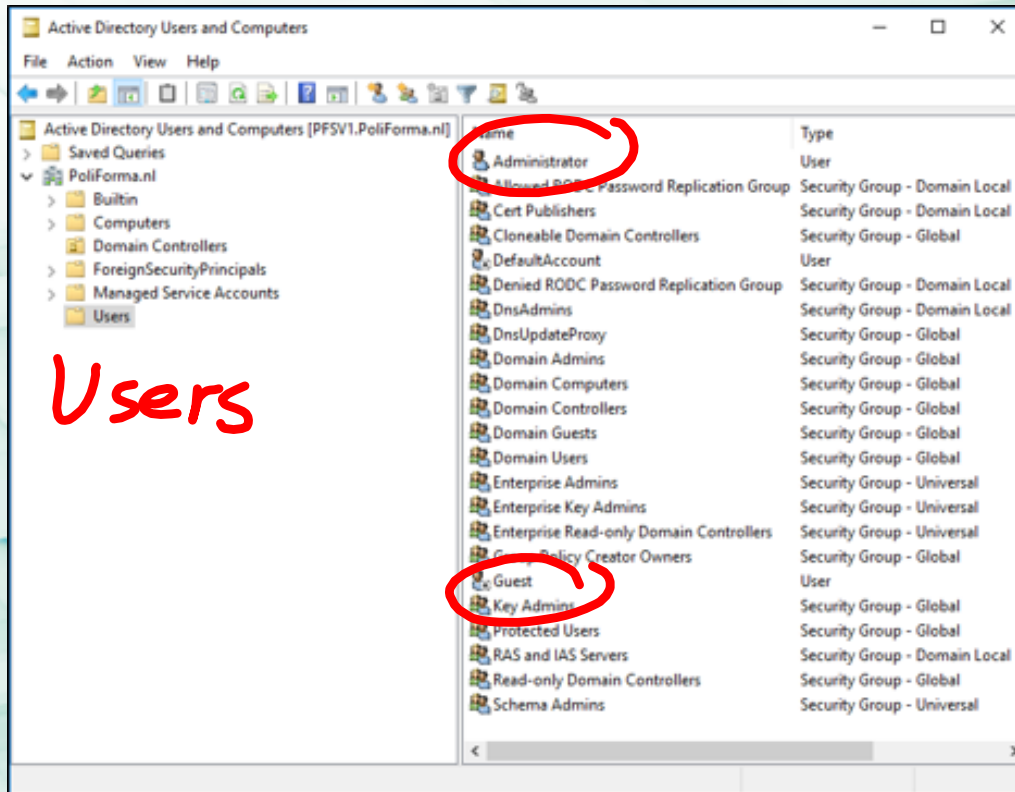
14-10-2018

Netwerbeheer met Windows Server 2016, Jan Smets

5

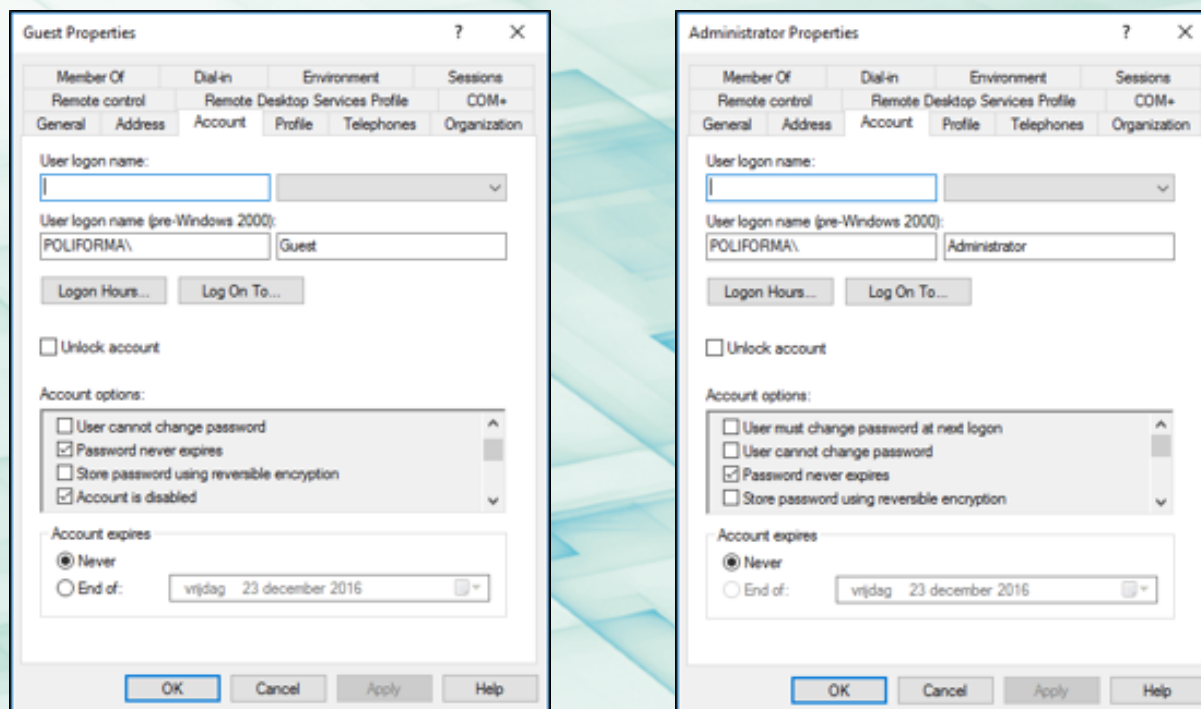


# Standaard gebruikers en groepen in AD



*Users*

## Uitgebreide user properties



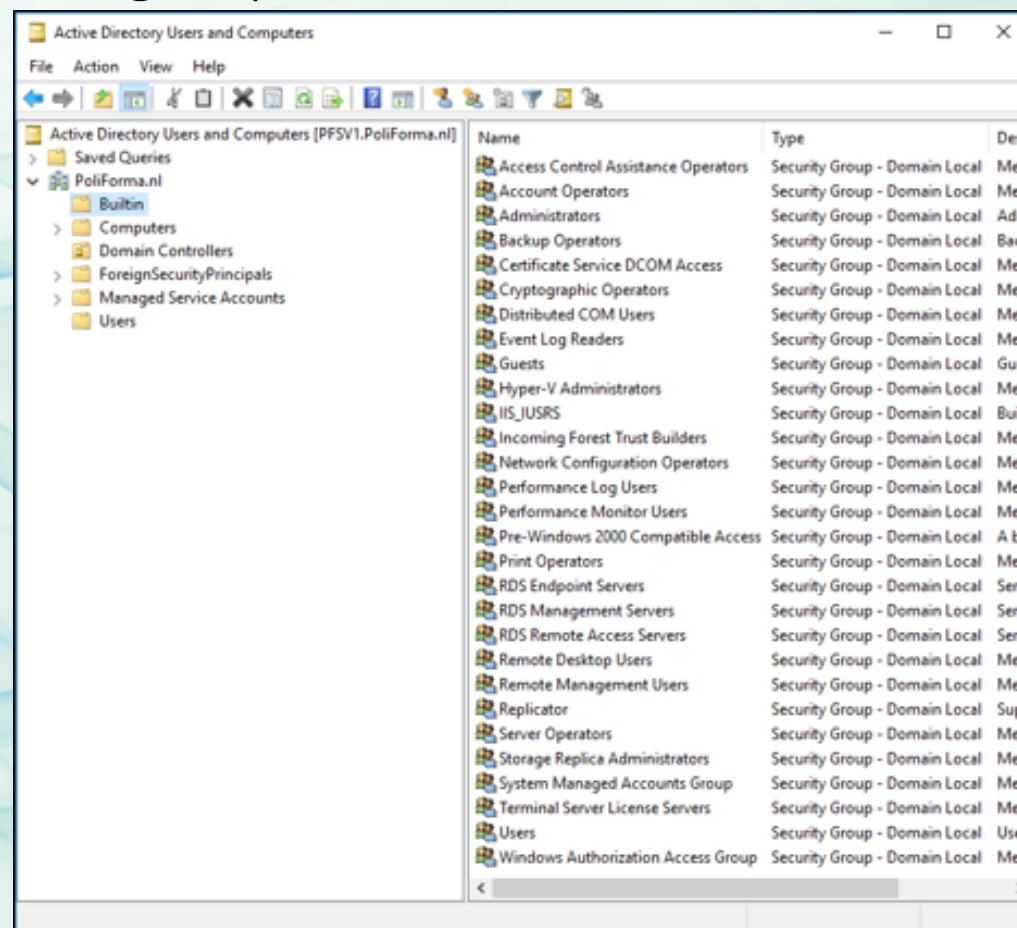
p. 94

14-10-2018

Netwerkbbeher met Windows Server 2016, Jan Smets

7

## Ingebouwde groepen in AD



The screenshot shows the 'Active Directory Users and Computers' console for the domain 'PoliForma.nl'. The left pane shows the tree structure with 'Builtin' expanded. The right pane displays a list of built-in groups with columns for Name, Type, and Description.

Name	Type	Desc
Access Control Assistance Operators	Security Group - Domain Local	Merr
Account Operators	Security Group - Domain Local	Merr
Administrators	Security Group - Domain Local	Adm
Backup Operators	Security Group - Domain Local	Back
Certificate Service DCOM Access	Security Group - Domain Local	Merr
Cryptographic Operators	Security Group - Domain Local	Merr
Distributed COM Users	Security Group - Domain Local	Merr
Event Log Readers	Security Group - Domain Local	Merr
Guests	Security Group - Domain Local	Gues
Hyper-V Administrators	Security Group - Domain Local	Merr
IIS_IUSRS	Security Group - Domain Local	Built
Incoming Forest Trust Builders	Security Group - Domain Local	Merr
Network Configuration Operators	Security Group - Domain Local	Merr
Performance Log Users	Security Group - Domain Local	Merr
Performance Monitor Users	Security Group - Domain Local	Merr
Pre-Windows 2000 Compatible Access	Security Group - Domain Local	A ba
Print Operators	Security Group - Domain Local	Merr
RDS Endpoint Servers	Security Group - Domain Local	Serve
RDS Management Servers	Security Group - Domain Local	Serve
RDS Remote Access Servers	Security Group - Domain Local	Serve
Remote Desktop Users	Security Group - Domain Local	Merr
Remote Management Users	Security Group - Domain Local	Merr
Replicator	Security Group - Domain Local	Supp
Server Operators	Security Group - Domain Local	Merr
Storage Replica Administrators	Security Group - Domain Local	Merr
System Managed Accounts Group	Security Group - Domain Local	Merr
Terminal Server License Servers	Security Group - Domain Local	Merr
Users	Security Group - Domain Local	Users
Windows Authorization Access Group	Security Group - Domain Local	Merr

p. 95

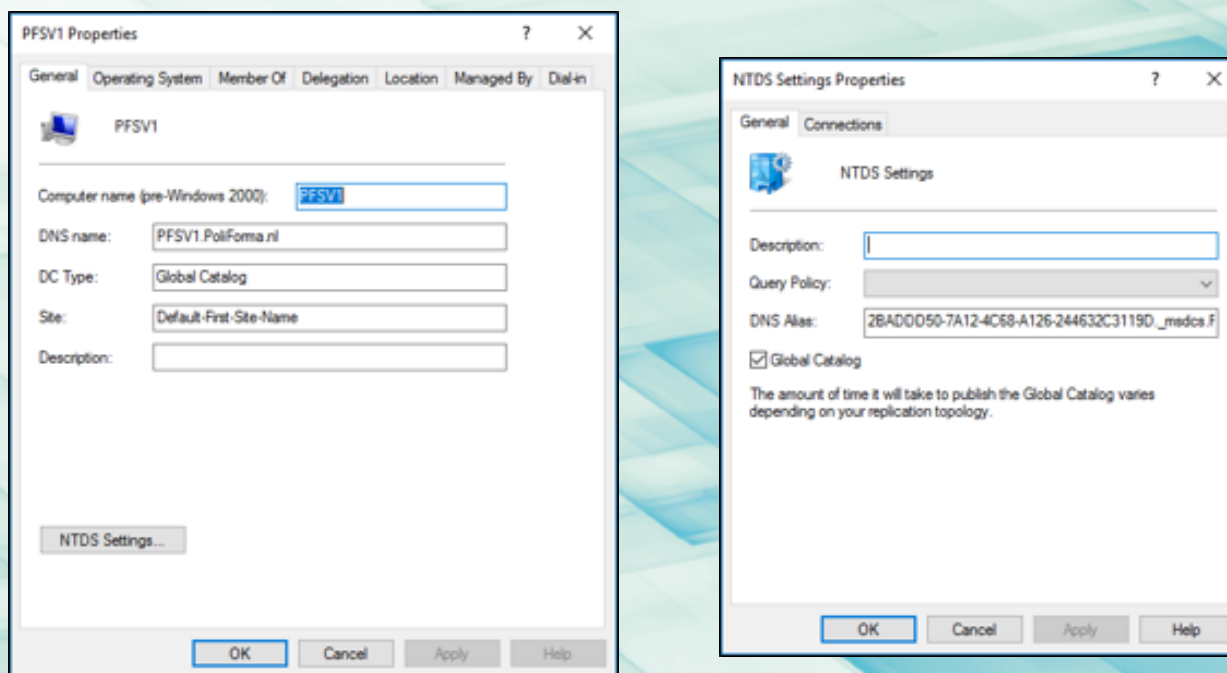
14-10-2018

Netwerkbbeher met Windows Server 2016, Jan Smets

8



## De eigenschappen van een DC en van AD



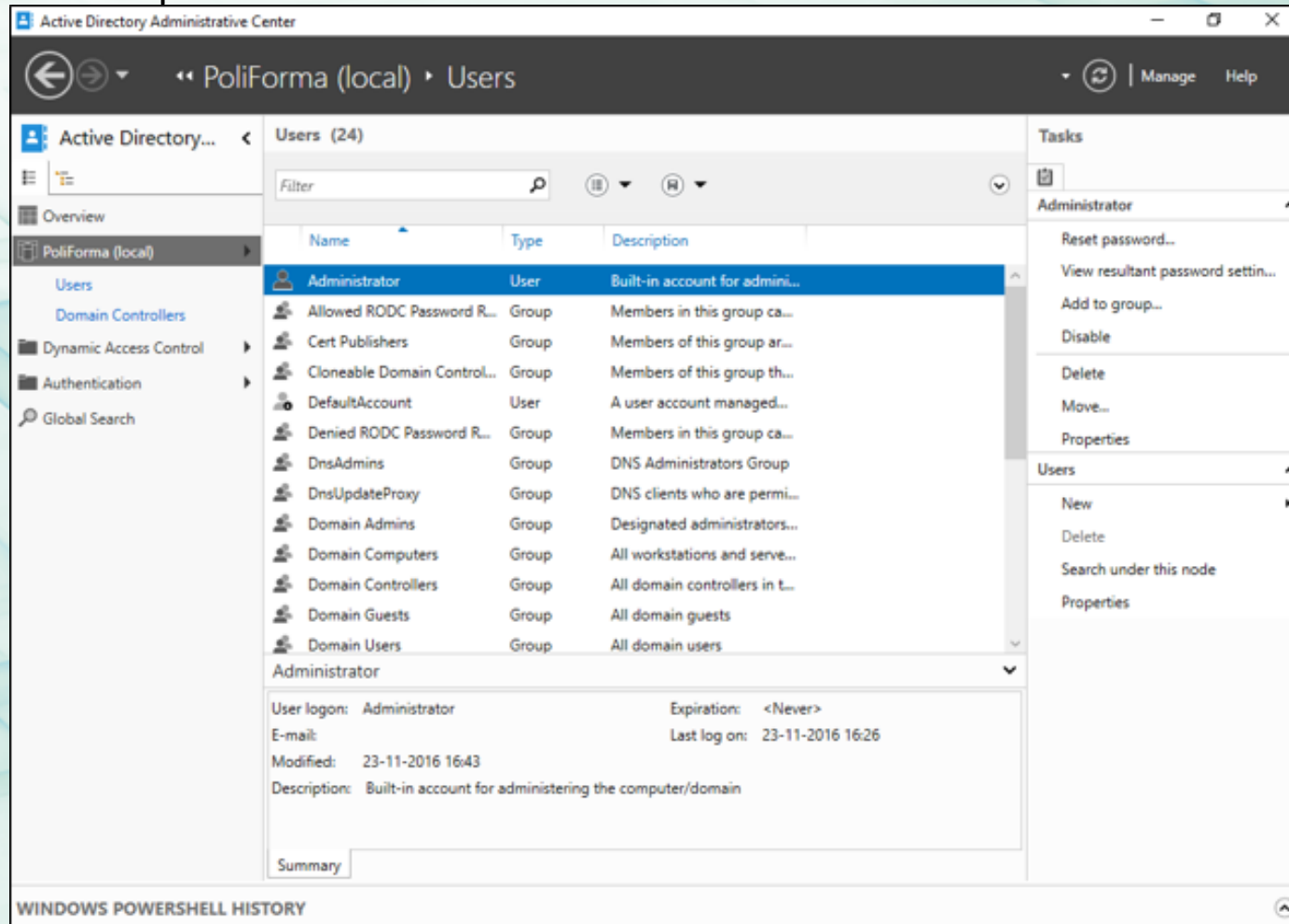
p. 96-98

Netwerkbbeher met Windows Server 2016, Jan Smets

9



# Een andere praktische beheertool

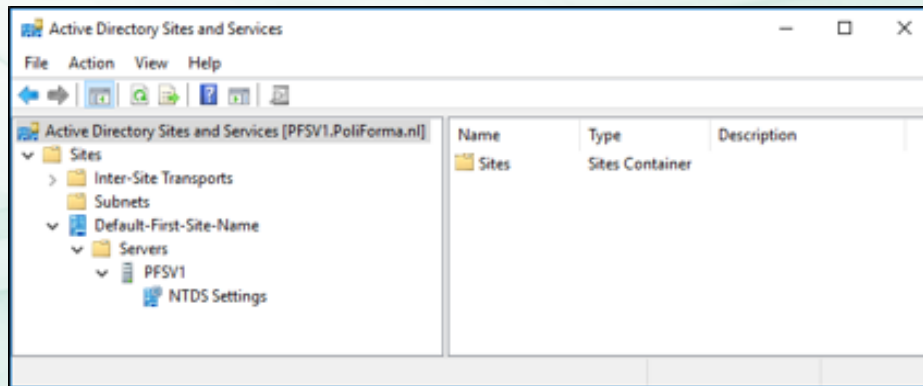


p. 99

14-10-2018

Administrative Center

# AD Sites and Services



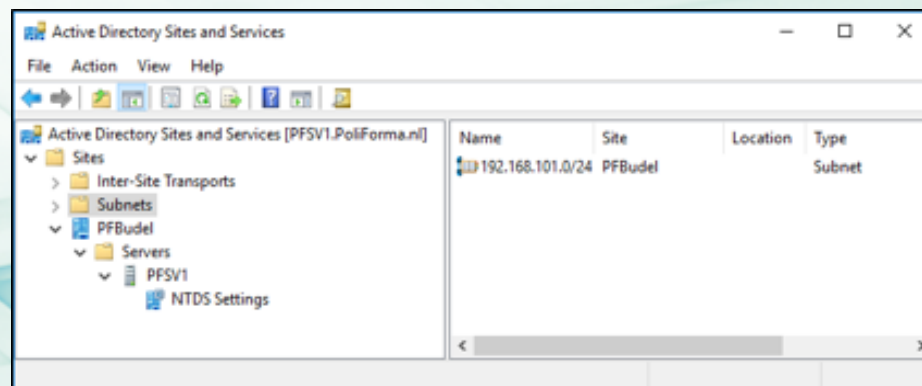
p. 99-101

14-10-2018

Netwerdbeheer met Windows Server 2016, Jan Smets

11

## De site koppelen aan een subnet



2.2.1.

p. 101

14-10-2018

Netwerdbeheer met Windows Server 2016, Jan Smets

12

## De DC is ook DNS-server



p. 104

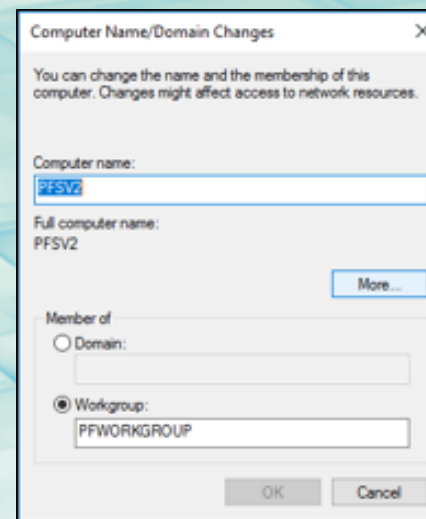
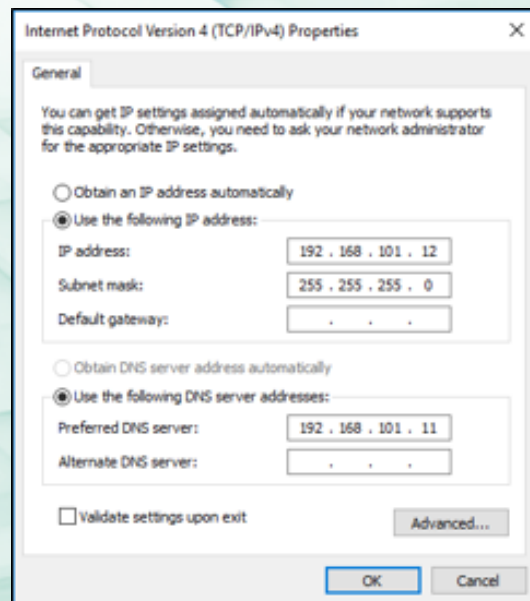
14-10-2018

Netwerkbbeher met Windows Server 2016, Jan Smets

13

## Member server toevoegen

- Moet weten wie de DNS-server is
- Toevoegen via de System Properties



p. 107-112

14-10-2018

Netwerkbbeher met Windows Server 2016, Jan Smets

14

## Fouttolerantie

- Betekent:
- Zorgen voor twee DC's
- Zorgen voor twee GCS'n
- Zorgen voor twee DNS-servers
- Member server opwaarderen tot tweede DC:
- AD DS installeren
- AD installeren:
- Ook global catalog installeren
- Ook DNS laten installeren
- Niet kiezen voor een RODC
- Laten repliceren vanaf de eerste DC

p. 114-122

14-10-2018

Netwerkbeheer met Windows Server 2016, Jan Smets

15

